



Thames Road, London, W4 3QS

£895,000

WHITMAN & CO.

SALES · LETTINGS · COMMERCIAL

- Master bedroom with luxury ensuite
- 19' Dual aspect reception room
- 14' kitchen/breakfast room
- Secure, gated off-street parking space

- Two further bedroms
- Private terraced garden
- Second reception/fourth bedroom

Tenure - Freehold
Local Authority - Hounslow
Council Tax - Band G

THE PROPERTY

An extremely adaptable freehold home and former Police Station offering exceptional space and light in the sought-after and historic Strand on the Green Area.

The property includes a principal bedroom with a luxury ensuite, two further bedrooms, a large loft, a shower room, a 19' dual aspect reception room with French windows onto a private terraced garden, 14' kitchen/breakfast room, a second reception room/fourth bedroom, and a secure gated off-street parking space.

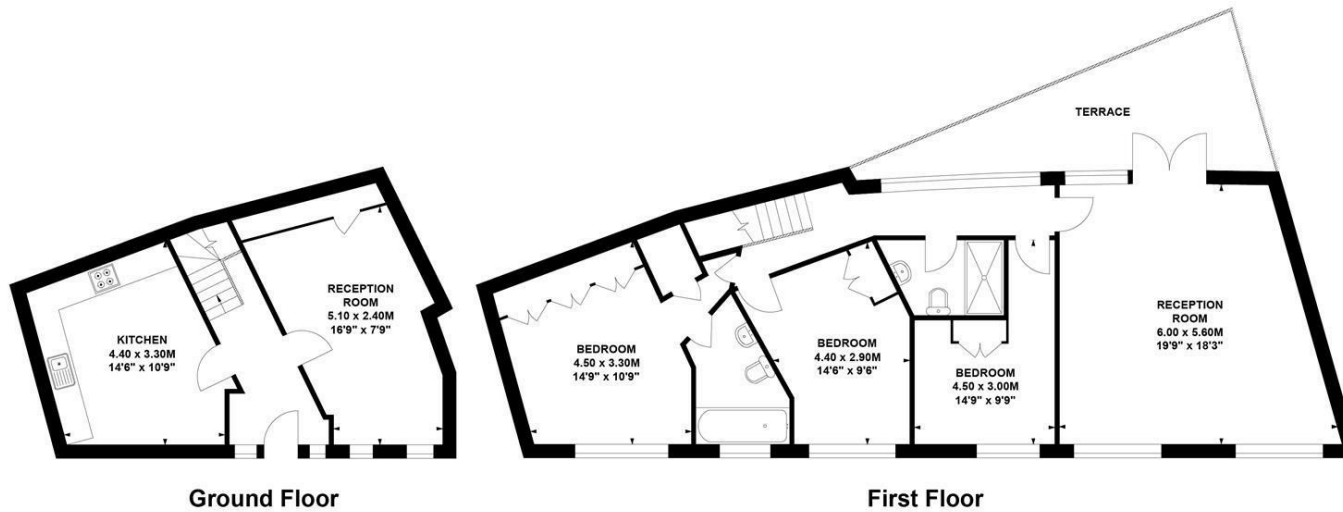
Ideally situated opposite the River Thames, with its Historic walks and Gastro Pubs and access to numerous transport facilities. Viewing highly recommended.

Thames Road, W4

Approximate Gross Internal Area
127.02 sq m / 1367 sq ft

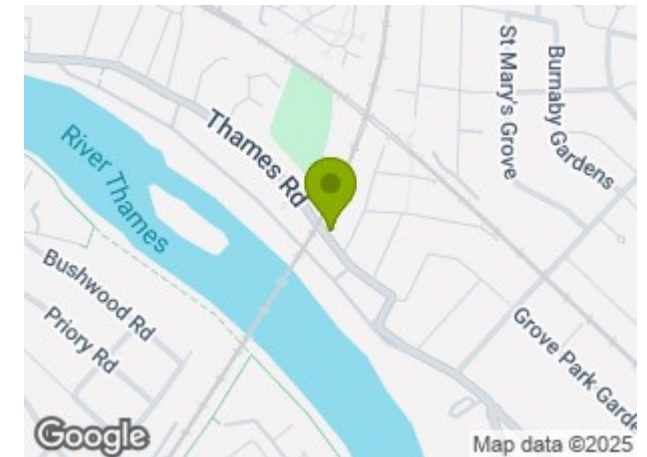


Key :
CH - Ceiling Height



Not to scale, for guidance only and must not be relied upon as a statement of fact.
All measurements and areas are approximate only

SITUATION



5-7 Turnham Green Terrace, Chiswick, London, W4 1RG

Tel 020 8747 8800

E-mail sales@whitmanandco.com

Website www.whitmanandco.com

